


مِنْ خَاكٍ مِّمَّنْ بَكَ أَفْقَدَ سَوْز و لُوبِ بَسْتَمِ: بِيَمِزْ أَفْدِيكَ

سنگین سماعی

فنی ا بک تا مه Méh ta bine. uFuk دن dén سو su زو zu اکوب lūb



بات دی گی آن دی
 Bat di gi An di

"مزان"
 M.

دك شيك لي بر سك سي كيه دك عو
 Ou dounla sé sine bir lé ché rék

ساز - دی یان دا شتر عر
 M. di dayan dia Ar

The musical notation for the first line is written on a single staff with a treble clef and a key signature of one sharp (F#). The melody consists of the following notes: A4 (quarter), B4 (quarter), C#5 (quarter), B4-A4 (beamed eighth notes), G4 (quarter), F#4 (quarter), E4 (quarter), D4 (half). The lyrics are written above the staff: 'ساز - دی' (Saz-e Di) above the first two notes, 'یان دا' (Yan Da) above the next two notes, 'شتر' (Shtr) above the next two notes, and 'عر' (Ar) above the final note.

رڤك شبر له Bir سڤ سى لى دك عو
 rck chd le' sine la oudin

The first line of musical notation is written on a single staff with a treble clef and a key signature of one sharp (F#). The melody consists of several eighth and sixteenth notes, with some beamed together. The lyrics are written above the staff, with some words in Arabic script and others in Latin script.

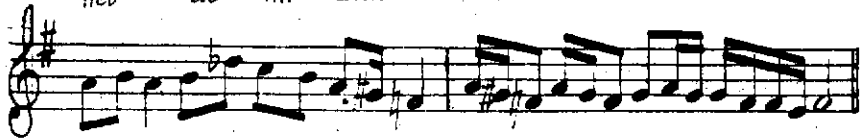
عی یان دا شادی سازه
 Ar cha-da-yan di di M.

The musical notation is written on a single staff with a treble clef and a key signature of one sharp (F#). The melody consists of a series of eighth and sixteenth notes, with some rests. The lyrics are written above the staff, and the letters 'Ar', 'di', and 'M.' are written below the staff at specific points.

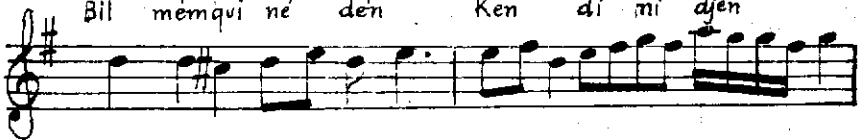
جن دی کن دن نه که مم بیل (میان)
 djén di quén dén Bîl mémqui.né



دی سان می ده نت
 di san mi dé nèt



جن دی کن دن نه که مم بیل
 djén di Kén dén né Bîl mémqui



دی "ساز" سان می ده نت
 di "M." san mi dé nèt



سَو جی نی مش یوش او ده نم کوی
 sév djé ni moueh youch ou déu nm kéu



دی یان او لار دا
 di ouyan lan da

